

EASILY CONFUSED SNAKES

A side-by-side comparison of easily confused snakes.



Photo: Tyrone Ping



SPOTTED BUSH SNAKE

(*Philothamnus semivariiegatus*)

HARMLESS

Not dangerous to humans



Photo: Tyrone Ping



EASTERN NATAL GREEN SNAKE

(*Philothamnus natalensis natalensis*)

HARMLESS

Not dangerous to humans



WESTERN NATAL GREEN SNAKE

(*Philothamnus natalensis occidentalis*)

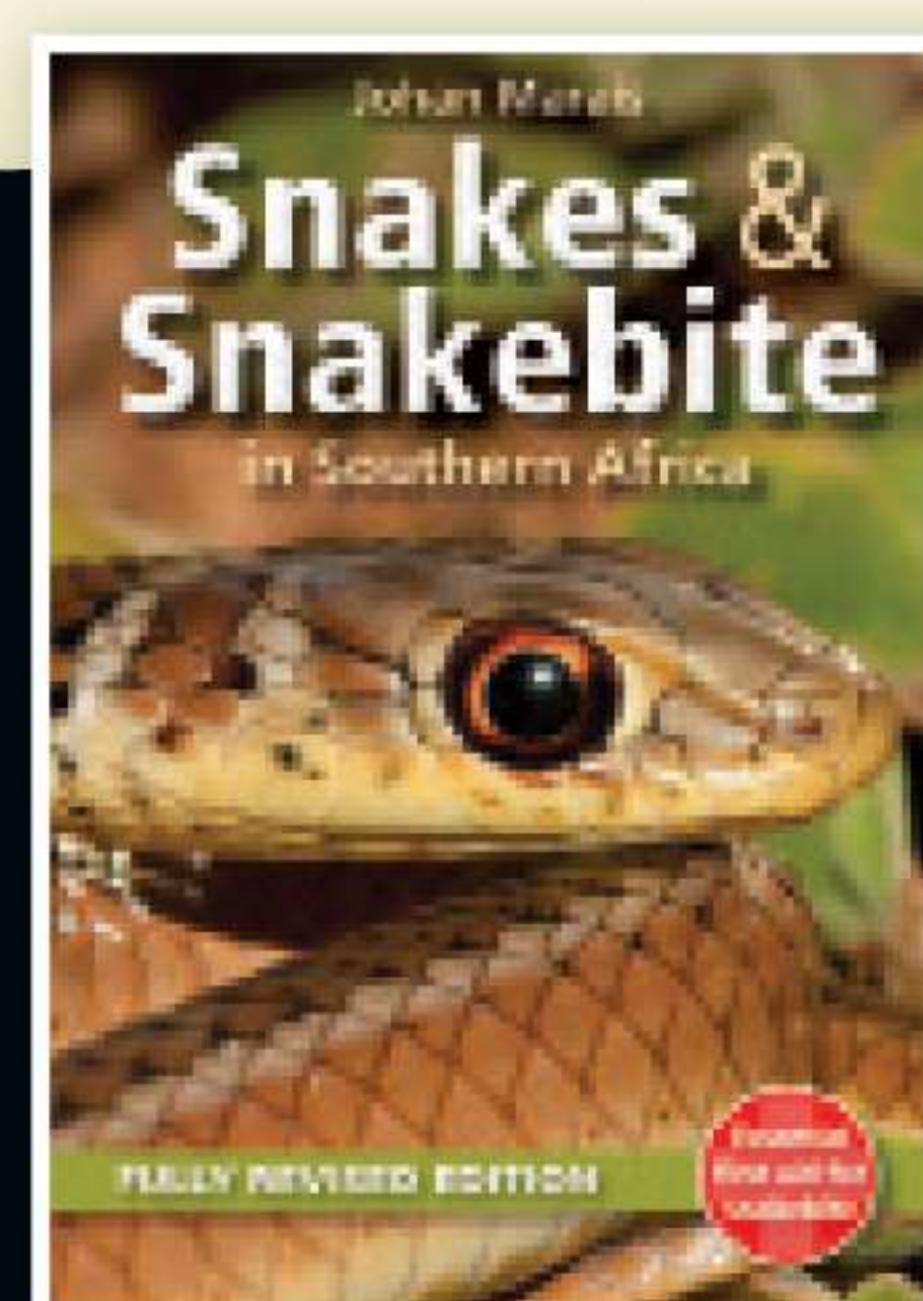
HARMLESS

Not dangerous to humans



© Johan Marais African Snakebite Institute

Johan Marais
African Snakebite Institute
+27 82 494 2039
johan@asiorg.co.za
Find out more at
www.africansnakebiteinstitute.com



JOHAN MARAIS is the author of various books on reptiles including the best-seller *A Complete Guide to Snakes of Southern Africa*. He is a popular public speaker and offers a variety of courses including *Snake Awareness*, *Scorpion Awareness* and *Venomous Snake Handling*. Johan is accredited by the International Society of Zoological Sciences (ISZS) and is a Field Guides Association of Southern Africa (FGASA) and Travel Doctor-approved service provider. His courses are also accredited by the Health Professions Council of South Africa (HPCSA).