

The **SNAKES** of **SOUTHERN AFRICA**

Southern Africa has **171** different types of snakes.

72 OF THEM ARE NOT VENOMOUS

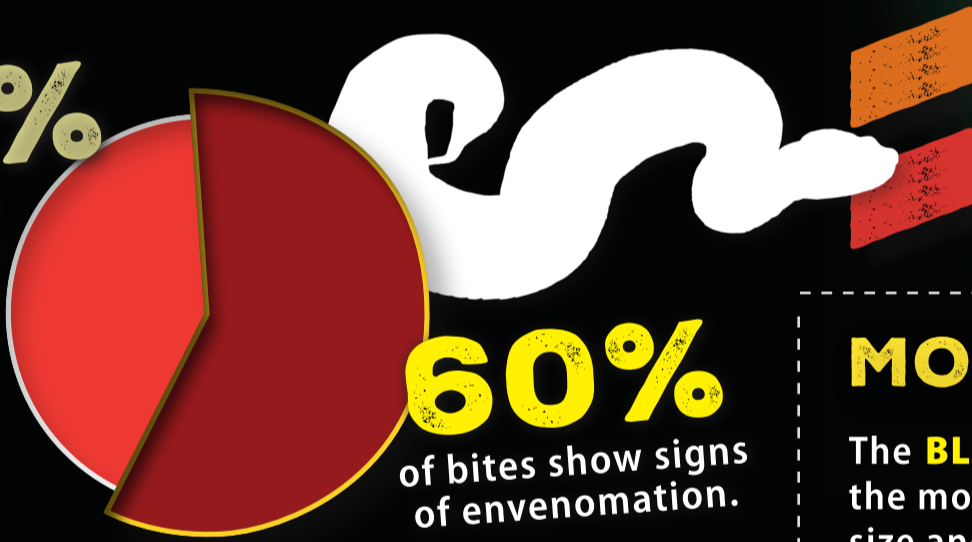
50 ARE MILDLY VENOMOUS (BUT NOT CONSIDERED TO BE DANGEROUS)

29 ARE CAPABLE OF INFLECTING VERY PAINFUL BITES

20 OF OUR SNAKES ARE CONSIDERED POTENTIALLY DEADLY

40%

of snakebite victims have dry bites with no antivenom required.



60% of bites show signs of envenomation.

MOST DANGEROUS

The **BLACK MAMBA** is considered the most dangerous due to its size and potent neurotoxic venom.



SERIOUS SNAKEBITES

Most serious snakebites are inflicted by the Mozambique Spitting Cobra, Puff Adder, Stiletto Snake and Night Adder. **They account for 90% of all bites.**

MOST BITES OCCUR...

- **EARLY EVENING** in warm summer months Jan–Apr.
- **WHERE?** **84%** of bites are below the knee.
- **WHO?** Largely males between **14–25** years of age.

WHEN BITTEN

DO NOT ... cut and suck
... apply a tourniquet
... inject antivenom

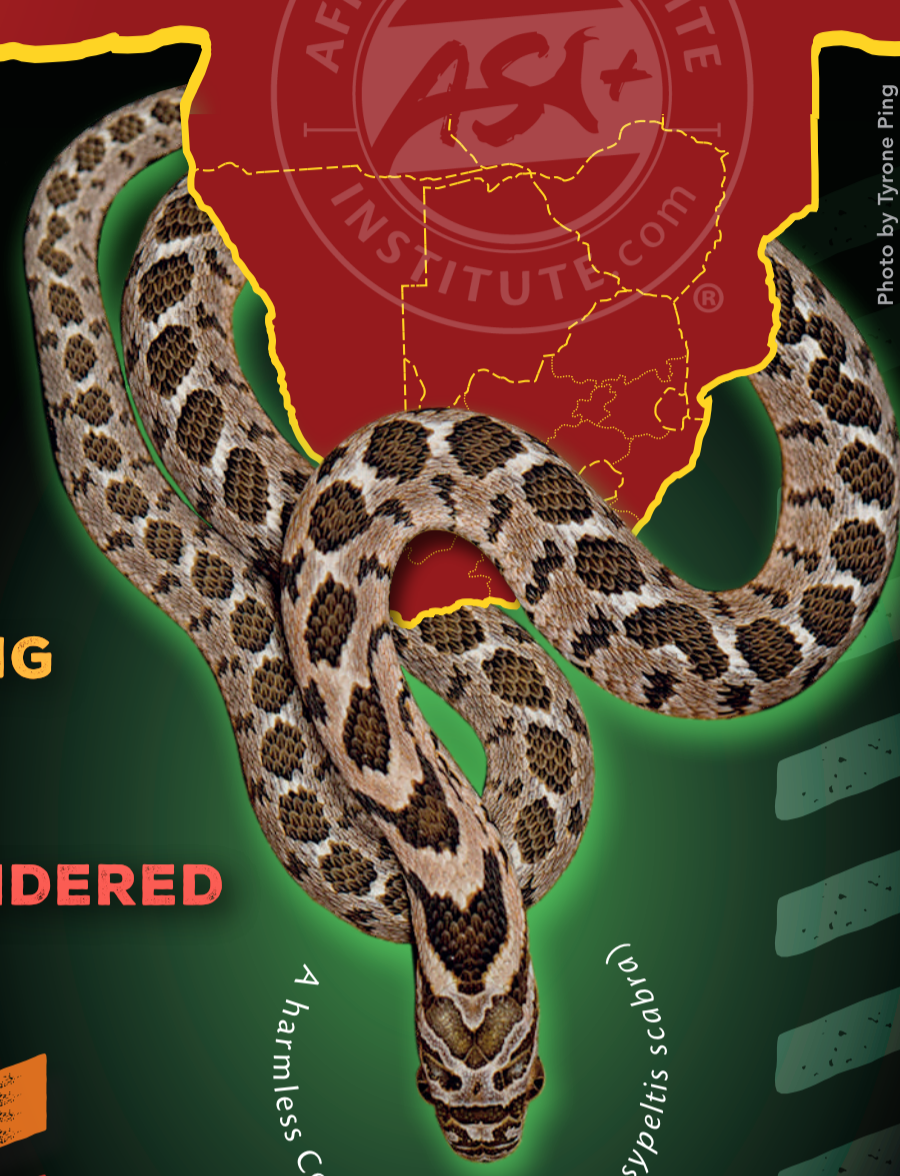
DO Transport the victim to the nearest hospital **!**

**ANTI-
VENOM**
LESS THAN 15%
of snakebite victims
need and receive
antivenom.

Johan Marais | +27 82 494 2039 | johan@asiorg.co.za

www.**AFRICANSNAKEBITEINSTITUTE**.com

© Johan Marais African Snakebite Institute



A harmless Common Egg-eater (*Dasypeltis scabra*)

Photo by Tyrone Ping

