

COMMON SNAKES OF LIMIETBERG NATURE RESERVE



VERY DANGEROUS

Has caused human fatalities

DANGEROUS

Painful bite, but does not require antivenom

MILDLY VENOMOUS

Not thought to be harmful to humans

HARMLESS

Not dangerous to humans



Cape Cobra
(*Naja nivea*)



Rinkhals
(*Hemachatus haemachatus*)



Boomslang - male
(*Dispholidus typus*)



Puff Adder
(*Bitis arietans*)



Herald Snake
(*Crotaphopeltis hotamboeia*)



Many-spotted Reed Snake
(*Amplorhinus multimaculatus*)



Spotted Harlequin Snake
(*Homoroselaps lacteus*)



Berg Adder
(*Bitis atropos*)



Mole Snake
(*Pseudaspis cana*)



Spotted Skaapsteker
(*Psammophylax rhombatus*)



Cross-marked Grass Snake
(*Psammophis crucifer*)



Spotted Rock Snake
(*Lamprophis guttatus*)



Brown Water Snake
(*Lycodonomorphus rufulus*) - photo Luke Kemp



Olive Snake
(*Lycophidion inornatus*)



Sundevall's Shovel-snout
(*Prosymna sundevallii*)



Common Slug-eater
(*Duberria lutrix*)

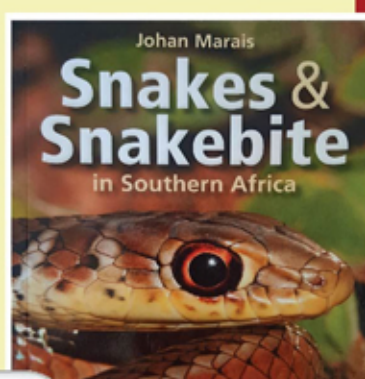
JOHAN MARAIS is the author of various books on reptiles including the best-seller *A Complete Guide to Snakes of Southern Africa*. He is a popular public speaker and offers a variety of courses including **Snake Awareness**, **Scorpion Awareness** and **Venomous Snake Handling**. Johan is accredited by the International Society of Zoological Sciences (ISZS) and is a Field Guides Association of Southern Africa (FGASA) and Travel Doctor-approved service provider. His courses are also accredited by the Health Professions Council of South Africa (HPCSA).

FREE ASI SNAKES APP

Johan Marais | African Snakebite Institute

+27 82 494 2039 | johan@asiorg.co.za

www.AFRICANSNAKEBITEINSTITUTE.com



EMERGENCY PROTOCOL

IN THE EVENT OF A SNAKE BITE

- 1 Keep the victim calm, immobilized and transport the victim to the closest hospital **without delay**.
- 2 If the victim stops breathing, resort to artificial respiration or make use of a Bag Valve Mask.
- 3 Call the Poison Information Centre help-line for further advice: 0861 555 777.

DO NOT

- ... apply a tourniquet.
 - ... cut and suck the wound.
 - ... use ice or very hot water.
 - ... give the victim alcohol.
 - ... apply electric shock.
 - ... inject antivenom randomly.
- Antivenom (if required) must be administered by a doctor in a hospital environment.