

DANGEROUS SNAKES OF KENYA

Kenya has a large selection of snakes across different habitats. Fifteen species are considered highly venomous and around twenty one species are dangerous or can inflict a painful bite.

**HIGHLY
 VENOMOUS**

Has caused human fatalities

VENOMOUS

Painful bite, but does not require antivenom



**HIGHLY
 VENOMOUS**

Black Mamba
(Dendroaspis polylepis)



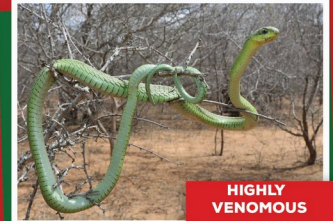
**HIGHLY
 VENOMOUS**

Green Mamba
(Dendroaspis angusticeps)



**HIGHLY
 VENOMOUS**

Jameson's Mamba
(Dendroaspis jamesoni) - photo Bill Branch



**HIGHLY
 VENOMOUS**

Boomslang
(Dispholidus typus)



**HIGHLY
 VENOMOUS**

Egyptian Cobra
(Naja haje)



**HIGHLY
 VENOMOUS**

Brown Forest Cobra
(Naja subfulva) - photo Luke Kemp



**HIGHLY
 VENOMOUS**

Black-necked Spitting Cobra
(Naja nigricollis)



**HIGHLY
 VENOMOUS**

Vine Snake
(Thelotornis sp.)



**HIGHLY
 VENOMOUS**

Ashes Spitting Cobra
(Naja ashei)



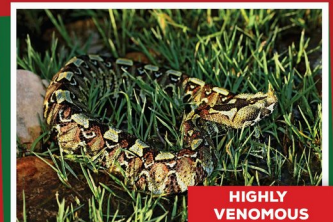
**HIGHLY
 VENOMOUS**

Red Spitting Cobra
(Naja pallida)



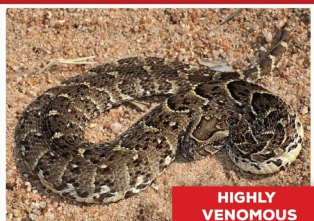
**HIGHLY
 VENOMOUS**

Gaboon Adder
(Bitis gabonica)



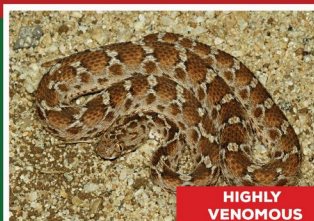
**HIGHLY
 VENOMOUS**

Rhino-horned Viper
(Bitis nasicornis)



**HIGHLY
 VENOMOUS**

Puff Adder
(Bitis arietans)



**HIGHLY
 VENOMOUS**

North-east African Carpet Viper
(Echis pyramidum)



VENOMOUS

Common Night Adder
(Causus rhombeatus)



VENOMOUS

Stiletto Snake
(Atractaspis sp.) - photo Bill Branch

Watamu Snake Farm

Jacaranda Road, Watamu, Kenya
 +254 723 386 558 | +254 707 577 748
 info@taaf-eastafreanreptiles.org
 www.taaf-eastafreanreptiles.org

EMERGENCY PROTOCOL

IN THE EVENT OF A SNAKE BITE

- 1 Keep the victim calm, immobilized and transport the victim to the closest hospital **without delay**.
- 2 If the victim stops breathing, resort to artificial respiration or make use of a Bag Valve Mask.
- 3 Contact **WATAMU SNAKE FARM** for removals or snakesbite advice:

+254 723 386558 or +254 707 577748

DO NOT

- ... apply a tourniquet.
- ... cut and suck the wound.
- ... use ice or very hot water.
- ... give the victim alcohol.
- ... apply electric shock.
- ... inject antivenom randomly. Antivenom (if required) must be administered by a doctor in a hospital environment.